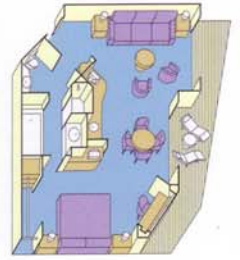


For the best fares on Sun or Dawn Princess call The Australian Travel & Trading Co. 1800 801 864

SUITE WITH BALCONY

Up to 80% larger than a mini-suite, this stateroom has a queen-size bed plus separate sitting area which includes a sofa bed and desk. Other amenities include two televisions, a combined DVD/CD player, free access to a DVD library, a refrigerator with mini-bar, a halo light magnifying mirror, a walk-in closet, free laundry and dry cleaning services, a fresh flower arrangement and a welcome glass of champagne. Your bathroom features upgraded amenities, a bath and massage shower head.

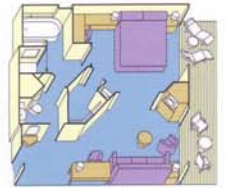
Approximately 50 to 65 sq metres, including balcony. Category **AA**



MINI-SUITE WITH BALCONY

A mini-suite with balcony is substantially larger than a balcony stateroom. Accommodations include a queen-size bed and a separate sitting area with a sofa bed and desk for lounging, entertaining or writing. Other amenities include a welcome glass of champagne, two televisions, a refrigerator and a walk-in closet. Your full bathroom includes a bath and massage shower head.

Approximately 34 to 50 sq metres, including balcony. Categories **AB AC**



OCEANVIEW STATEROOM WITH BALCONY

You deserve your own balcony – an affordable luxury with Princess Cruises. Twin beds that convert to a queen-size bed, a sitting area with a desk, a spacious closet, television and refrigerator all combine to create comfort as you cruise.

Approximately 17 sq metres, including balcony.

Categories **BA BB BC BD BE BF**



DELUXE OCEANVIEW STATEROOM

Take in the magnificent views from your stateroom window. Twin beds that convert to a queen-size bed, a refrigerator, television, closet, desk and bathroom with shower complete this stateroom.

Approximately 16 sq metres.

Categories **CC C DD**



OCEANVIEW STATEROOM

You'll enjoy value plus a retreat with the views from your stateroom window. (Categories GG-HH have obstructed views). Twin beds that convert to a queen-size bed, a refrigerator, television, closet and bathroom with shower complete your stateroom.

Approximately 12 to 14 sq metres.

Categories **D EE E FF F GG G HH**



INTERIOR STATEROOM

Even without a window, Princess Cruises makes you feel special. Two beds that convert to a queen-size bed. And you have a television, refrigerator, closet and bathroom with shower.

This is great value at approximately 12 to 14 sq metres.

Categories **II I JJ J K L M N**



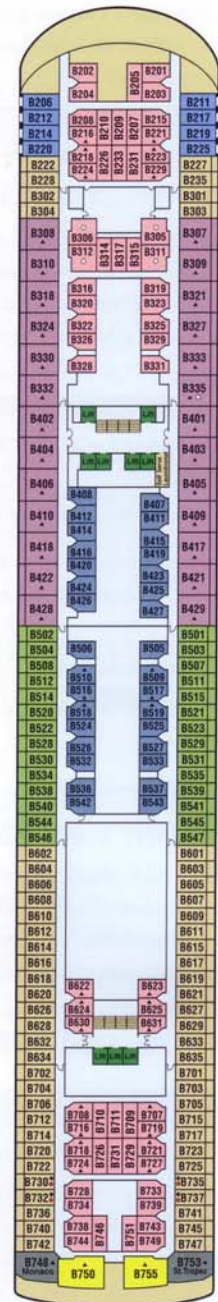
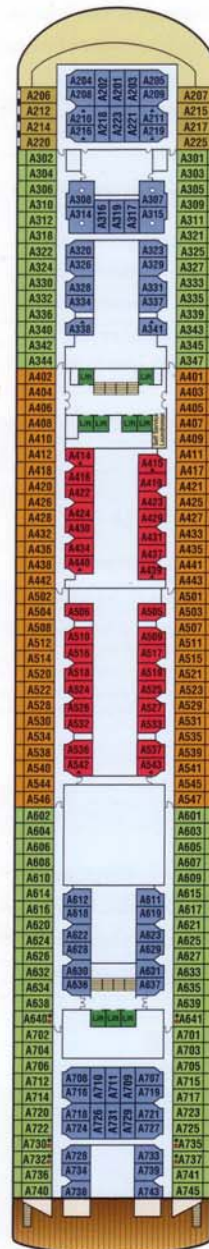
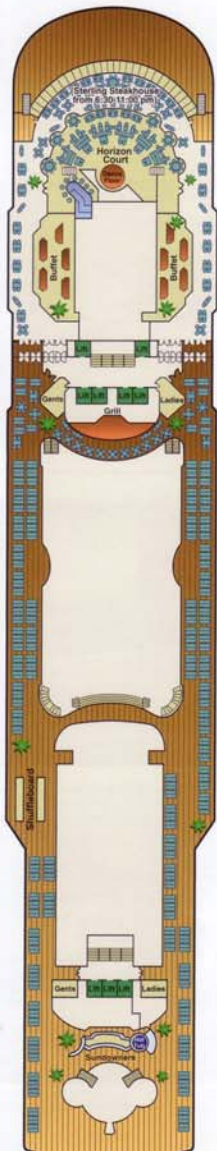
Floor plans and stateroom diagrams represent typical arrangement. Certain staterooms may vary in size and configuration. Square metres varies based on stateroom category and deck location. Please note, charges apply for flowers, fruit and champagne in staterooms.

SUN PRINCESS / DAWN PRINCESS DECK PLANS



SUPERLINER FEATURES • 1,950 passengers • 77,000 gross tons • 261 metres length • Fully airconditioned and stabilised • Bermudan registered

Forward



Aft

WE WON'T CHARGE YOU THE EARTH TO TRAVEL THE WORLD
The Australian Travel & Trading Co

ESTABLISHED 1991

ABN 77 054 074 949 - LIC 27A003494 - TRAVEL COMPENSATION FUND 240396 - 351 MANN STREET GOSFORD NSW 2250 AUSTRALIA
 PH: 61 2 4322 6860 FAX: 61 2 4322 6870 EMAIL: tattoo@tattoo.com.au WEB: www.holidaystrandtravel.com.au

DECK 15

DECK 14

DECK 13

DECK 12

DECK 11

For the best fares on Sun or Dawn Princess call The Australian Travel & Trading Co. 1800 801 864

SUN PRINCESS / DAWN PRINCESS DECK PLANS

Suite	Deck
▲ AA Suite with balcony	8,9,10
Mini-suite	
▲ AB Mini-suite with balcony	8,9,10
▲ AC Mini-suite with balcony	10
Oceanview Stateroom with Balcony	
BA Oceanview with balcony	11,12
● BB Oceanview with balcony	10,11
● BC Oceanview with balcony	9,10
BD Oceanview with balcony	9
BE Oceanview with balcony	9
BF Oceanview with balcony	9

Oceanview Stateroom	Deck
CC Deluxe Oceanview	11
C Deluxe Oceanview	10
DD Deluxe Oceanview	9
D Oceanview	8
EE Oceanview	8
● E Oceanview	6
● FF Oceanview	5
F Oceanview	5
● GG Oceanview (obstructed view)	8
G Oceanview (obstructed view)	8
HH Oceanview (obstructed view)	8

Interior Stateroom	Deck
▲ II Interior	11,12
▲ I Interior	10,11
▲ JJ Interior	9,10
▲ J Interior	8,9
▲ K Interior	5,6
▲ L Interior	5
M Interior	5
N Interior	5

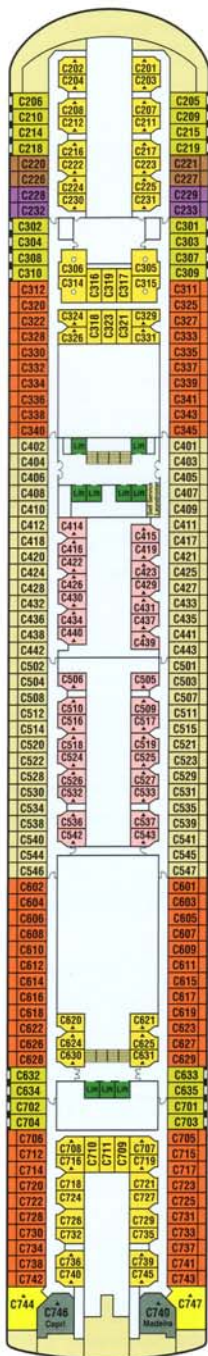
WE WON'T CHARGE YOU THE EARTH TO TRAVEL THE WORLD

The Australian Travel & Trading Co

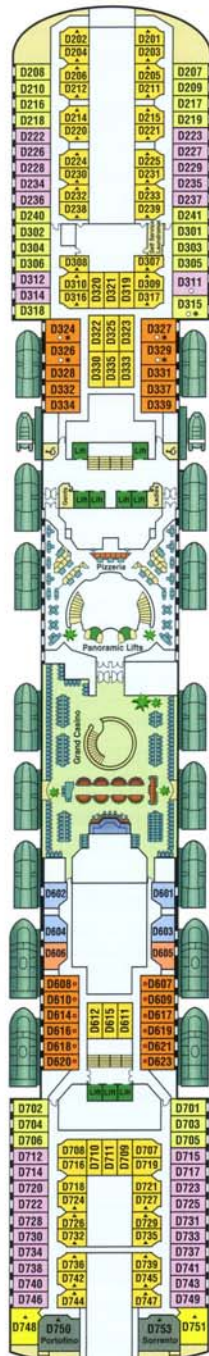
ESTABLISHED 1991

ABN 77 054 074 949 - LC 27A03064 - TRAVEL COMPENSATION FUND 24398 - 351 MANN STREET GOSFORD NSW 2250 AUSTRALIA
 PH: 61 2 4322 5860 FAX: 61 2 4322 5870 EMAIL: tatco@tatco.com.au WEB: www.holidaysandtravel.com.au

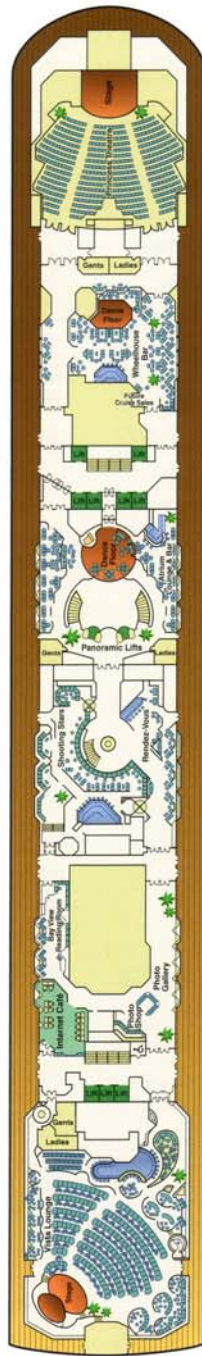
- Will accommodate 3rd/4th person
 - ▲ Will accommodate 3rd person
 - Wheelchair accessible staterooms; shower only
 - * Two lower beds not convertible to queen
- Deck plans are for illustration purposes only and are subject to change.
 Note: Cots available in select cabins only.



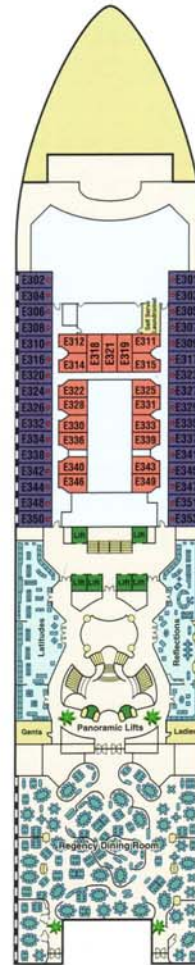
DECK 9



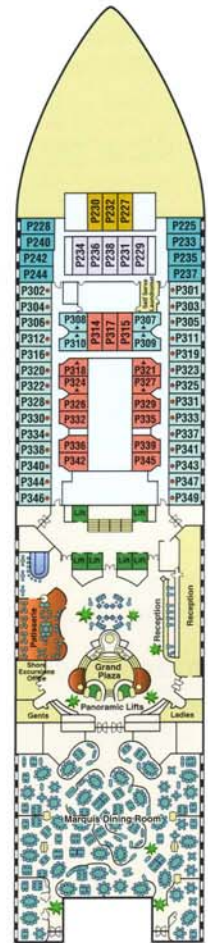
DECK 8



DECK 7



DECK 6



DECK 5

Note: Deck plans shown are for Sun Princess. Deck plans for Dawn Princess vary – visit dawnsunprincess.com.au to view full deck plans.

Sun Princess & Dawn Princess deck plan variations:

Deck	Sun Princess	Dawn Princess
5	Marquis Dining Room	Florentine Dining Room
6	Regency Dining Room	Venetian Dining Room
7	Shooting Stars	Jammers
7	Rendez-Vous	Magnums
14	Terrace Grill	Balcony Grill

Forward

Aft